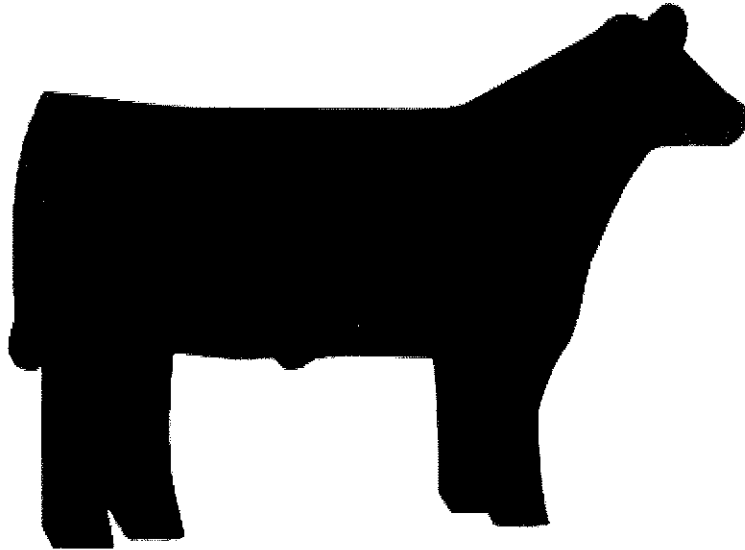


Benefit Raffle



Meat bundle equal to $\frac{1}{4}$ beef
Donated by Brad and Natalie Morgan
\$5.00/ ticket or
5 tickets for \$20.00
Drawing November 20th

All proceeds will help with medical expenses for
Ashley's son, Owen, replacing the savings recently
stolen from The Hungry Bird Cafe.

For more information or to purchase tickets:
Jenny Hartschen- hartschenj@nhr3.net
Kara Smith- smithk@nhr3.net