

Report

I asked the other groups in my class what their amount of each color of candy was. After I collected all of their data, I found the average of the class' amount of each color. The average number of Blue candies was 12, I had 12 blue candies. The average number of orange candies was 11, I had 14 orange candies. The average number of yellow candies was 9, I had 6 yellow candies. The average number of brown candies was 9, I had 3 brown candies. The average number of red candies was 8, I had 12 red candies. The average number of green candies was 6, I had 6 green candies. The average total number of candies was 55, my total was 53. As you can see, some of the averages were close to my result and other was not as close.

I asked each group what their percent of each color was. After I gathered the data I calculated the average percent for each color. The average percent of blue candies was 21%, 23% was my percent of blue candies. The average percent of orange candies was 16%, 26% was my percent of orange candies. The average percent of yellow candies was 15%, 11% was my percent of yellow candies. The average number of brown candies was 14%, 7% was my percent of brown candies. The average number of red candies was 15%, 23% was my percent of red candies. The average number of green candies was 12%, 11% was my percent of green candies. As you can see the average percent of candies were close to my percent of candies.

From doing the M&M webquest I learned facts about M&Ms and I learned ways to calculate different things in math. Some fun facts I learned about were, M&Ms have an ice cream bar out. I learned there are peanut butter M&Ms. I didn't know that there is an M&M racecar. I thought these facts were really cool. On the math side of thing I learned, I learned that if you have decimals numbers in the hundredths place, the percent is the same number as the decimal number. What I mean is the decimal number 0.23 is 23%.

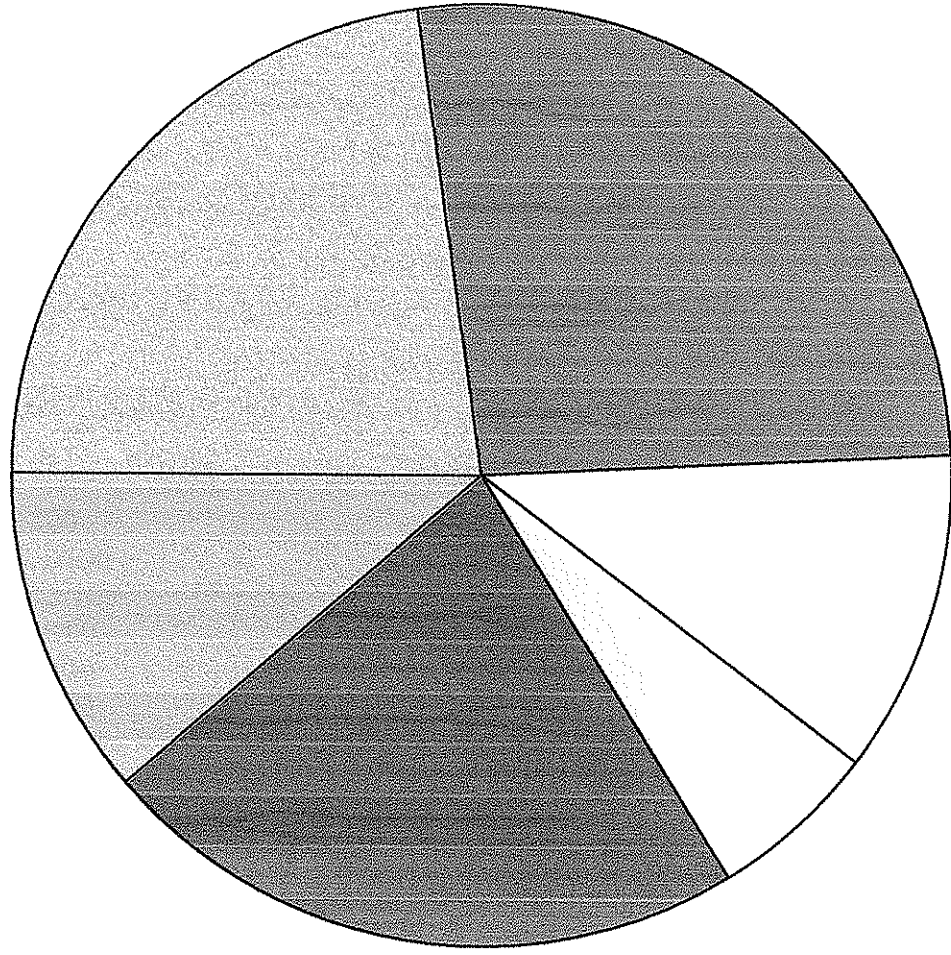
As A resource for my 10 questions I used www.mms.com



Betsy

1. A ratio is a comparison between two different things. Someone could make a ratio on men to women in a group. They could make a ration on ducks to geese in a park. You could also show a ratio of how much money Samantha has to how much Betsy has.
2. I got the information for number one on www.purplemath.com.
3. A ratio tells how one number is related to another number and a fraction is a part on an entire object.
4. I found the difference on www.aaamath.com
5. Orange-5
Red-2
Brown -2
Blue-4
Yellow-3
Green-4
6. I found this information on www.pave4.pavenet.com
7. I used a pie graph because a pie graph compares a section to the whole thing.
8. A multi-media presentation is a presentation that uses technology to show many medias.
9. Red wasn't used for several years because people thought the die caused cancer. People started eating red die again therefore the red M&M came back.
10. I got the information from www.wikiamswers.com
11. Green is the newest color it was added in 1997..
12. I found the information on www.mms.com
13. George Carlin once said, "There is no blue food."
14. George Carlin is a stand up comedian. It depends if there still could be an argument because there are food that has a blue die in and there are food that is naturally blue. There for yes there could still be an argument.
15. To get the information on blue food I used www.sntranscript.it.org and www.boulter.com

Colors of M&Ms



- Blue
- Orange
- Yellow
- Brown
- Red
- Green

M & M Webquest

Hypothesis: I think that there is more of one color, than another color.

Data Table

Color	# per Group
Blue	14
Orange	10
Yellow	8
Brown	12
Red	7
Green	6
Total	57

2. Ratios

$$\begin{aligned} \text{Blue} &= \frac{14}{57} \\ \text{Orange} &= \frac{10}{57} \\ \text{Yellow} &= \frac{8}{57} \\ \text{Brown} &= \frac{12}{57} \\ \text{Red} &= \frac{7}{57} \\ \text{Green} &= \frac{6}{57} \end{aligned}$$

3. Fractions

$$\begin{aligned} \text{Blue} &= \frac{14}{57} \\ \text{Orange} &= \frac{10}{57} \\ \text{Yellow} &= \frac{8}{57} \\ \text{Brown} &= \frac{12}{57} \\ \text{Red} &= \frac{7}{57} \\ \text{Green} &= \frac{6}{57} \end{aligned}$$

4. Fractions with denominators of 100

$$\begin{aligned} \text{Blue} &= \frac{24}{100} \\ \text{Orange} &= \frac{17}{100} \\ \text{Yellow} &= \frac{14}{100} \\ \text{Brown} &= \frac{21}{100} \\ \text{Red} &= \frac{12}{100} \\ \text{Green} &= \frac{10}{100} \end{aligned}$$

$$\text{Blue} = \frac{14}{57} = \frac{24}{100}$$

$$\begin{array}{r} 24.32 \\ 57 \overline{)1400} \\ \underline{-114} \\ 0260 \\ \underline{-228} \\ 032 \end{array}$$

$$\text{Orange} = \frac{10}{57} = \frac{17}{100}$$

$$\begin{array}{r} 17.30 \\ 57 \overline{)1000} \\ \underline{-57} \\ 0430 \\ \underline{-399} \\ 030 \end{array}$$

$$\text{Yellow} = \frac{8}{57} = \frac{14}{100}$$

$$\begin{array}{r} 14 \\ 57 \overline{)800} \\ \underline{-57} \\ 230 \\ \underline{-228} \\ 000 \end{array}$$

$$\text{Brown} = \frac{12}{57} = \frac{21}{100}$$

$$\begin{array}{r} 21.3 \\ 57 \overline{) 1,200} \\ \underline{-114} \\ 0060 \\ \underline{-57} \\ 03 \end{array}$$

$$\text{Red} = \frac{7}{57} = \frac{12}{100}$$

$$\begin{array}{r} \times 12.16 \\ 57 \overline{) 700} \\ \underline{-57} \\ 130 \\ \underline{-114} \\ 016 \end{array}$$

$$\text{Green} = \frac{6}{57} = \frac{10}{100}$$

$$\begin{array}{r} 10.30 \\ 57 \overline{) 600} \\ \underline{-57} \\ 030 \\ \underline{-0} \\ 30 \end{array}$$

5. Decimals

$$\text{Blue} = 0.24$$

$$\text{Orange} = 0.17$$

$$\text{Yellow} = 0.14$$

$$\text{Brown} = 0.21$$

$$\text{Red} = 0.12$$

$$\text{Green} = 0.10$$

6. Percentages

$$\text{Blue} = 24\%$$

$$\text{Orange} = 17\%$$

$$\text{Yellow} = 14\%$$

$$\text{Brown} = 21\%$$

$$\text{Red} = 12\%$$

$$\text{Green} = 10\%$$

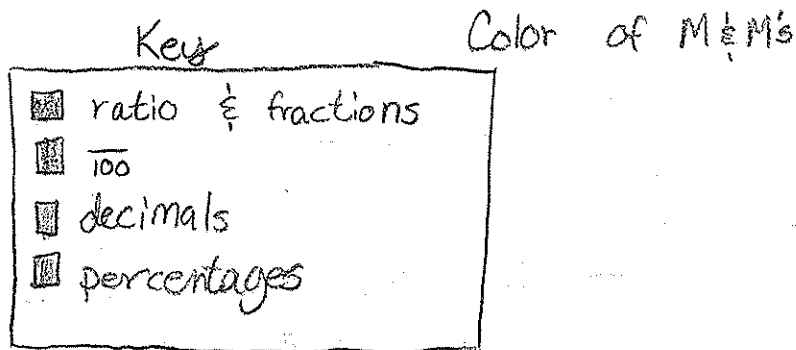
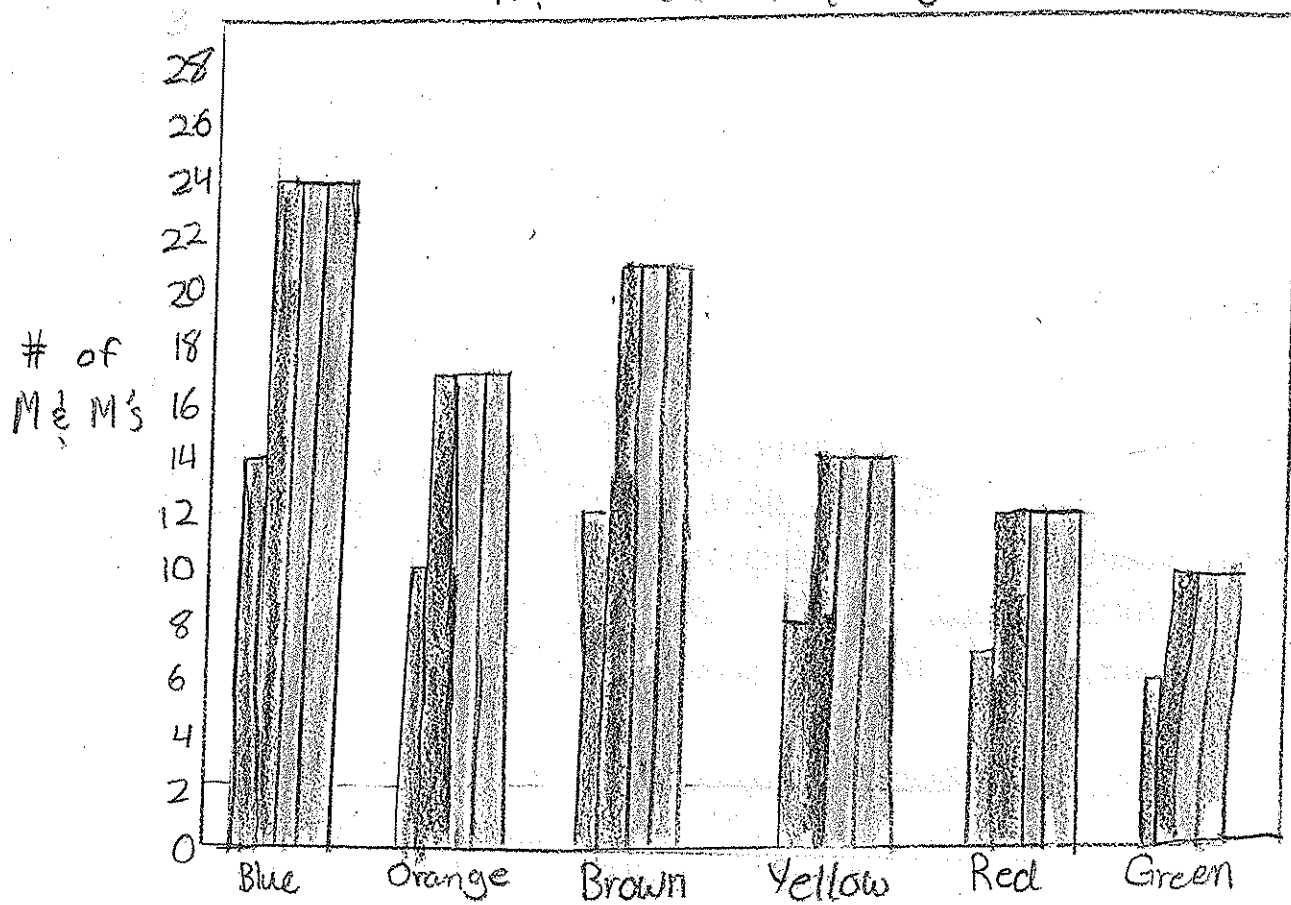
Data Table

Color	# in pkg.	ratio	Fractions	$\frac{\quad}{100}$	Decimals	Percentages
Blue	14	$\frac{14}{57}$	$\frac{14}{57}$	$\frac{24}{100}$	0.24	24%
Orange	10	$\frac{10}{57}$	$\frac{10}{57}$	$\frac{17}{100}$	0.17	17%
Yellow	8	$\frac{8}{57}$	$\frac{8}{57}$	$\frac{14}{100}$	0.14	14%
Brown	12	$\frac{12}{57}$	$\frac{12}{57}$	$\frac{21}{100}$	0.21	21%
Red	7	$\frac{7}{57}$	$\frac{7}{57}$	$\frac{12}{100}$	0.12	12%
Green	6	$\frac{6}{57}$	$\frac{6}{57}$	$\frac{10}{100}$	0.10	10%

7. We couldn't find anything that had to do with number of the colors in each package.

8.

M&M's Colors in a Bag



9. On Computer

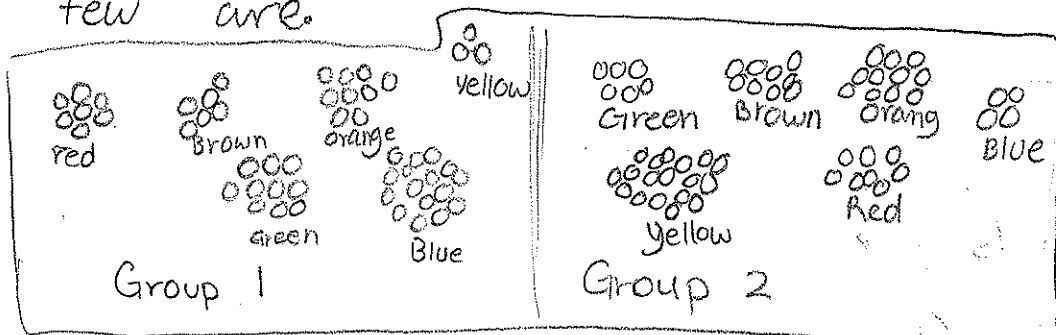
M&M Colors

In our Science class we did a webquest on the colors of m&m's in a bag. The average number of m&m's in a bag for the whole class is 55 m&m's. There were different numbers of colors in each bag. Some had more yellow than blue, some had 6 green m&m's, some had 7. Nothing was too different, but it wasn't quite the same.

In my group we had 57 m&m's total. There were 14 blues, 10 oranges, 8 yellows, 12 browns, 7 reds, and 6 greens. As you can see the numbers aren't even. Everyone else experienced that, too. We all had different numbers of colors. Everyone in our class contributed information to this paper.

The greatest number of m&m colors was blue, and the least is green. My group had more blues than anything else, and the least amount was green. Two other groups had the most blue, two other groups (out of the 9) had green as the least.

I learned that not all groups number of colors are the same, but at the same time a few are.

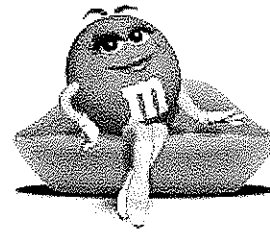
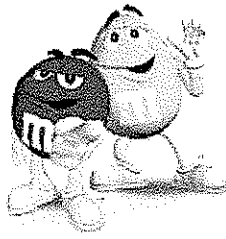


(M) M&M Quiz (M)

1. A ratio is a way to compare two things by numbers. Here are three ways to write ratios: $\frac{2}{3}$, 2 to 3, or 2:3.
2. I didn't use an internet source. I already knew.
3. A Ratio is different from a fraction because a ratio is merely comparing things. A fraction has to do with wholes and dividing.
4. I found the difference at <http://is.uwinnipeg.ca/~james/New%20Pages/MYR2.html>.
5.

Blue	Orange	Yellow	Red	Brown	Green
4	5	3	2	2	4
6. I found the answer on the webquest page.
7. I used a bar graph because I thought it would do the best job comparing the m&m's.
8. A multi-media presentation is some kind of program on a computer that you can use to present something. Such as a powerpoint slideshow.
9. Red wasn't used because the red dye was thought to be cause of cancer. Scientist made a dye that doesn't have I think a chemical that to

9. (continued) could relate to cancer in, or people just started eating red foods again.
10. I found part on the WikiAnswers page; the rest I predicted on my own.
11. The color green was added in 1997. It is the newest color.
12. I found that information at <http://www.mms.com/>.
13. George Carlin said there is no blue food.
14. George Carlin was a comedian. No, the argument probably can't be made.
15. I found the answers at [http://snltranscripts.jt.org/175775 a carlin 2.html](http://snltranscripts.jt.org/175775%20a%20carlin2.html)



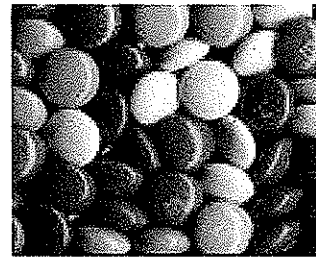
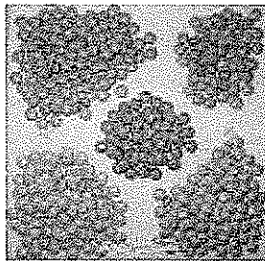
M&M Colors

By: Cooper

In my science class we're doing a web quest on the colors of M&M's in a bag. The average number of M&M's in a bag for the whole class is 55 M&M's per bag. There were different numbers of colors in each bag. Some had more yellow than blue. Some had 6 green M&M's, others had 7. Nothing was too different, but it wasn't quite the same.

In my group we had 57 M&M's total. There were 14 blues, 10 oranges, 8 yellows, 12 browns, 7 reds, and 6 greens. As you can see the numbers are similar, but not exactly even. Everyone else experienced that, too. The whole class contributed to this paper.

The greatest number of one M&M color in our package was blue, and the least was green. Out of 9 groups, 2 had Blue as their most color. Two different groups had green as the least. I learned that not all the groups number of colors were the same, but a few were similar.



M&M's in a Bag

